

PRESS RELEASE



REBIRTH OF A LEGEND

Nearly 94 years after her launch, Atlantide has been fully renewed and reawakened by the artisans at Huisfit by Royal Huisman. Following a complete rebuild, the Huisfit team is now excited to place the remarkable 37m / 122ft motorsailer in the spotlight she deserves, sharing insights and a stunning new photo library.



HUISFIT

BY ROYAL HUISMAN



PICTURES
TELL MORE THAN
1000 WORDS

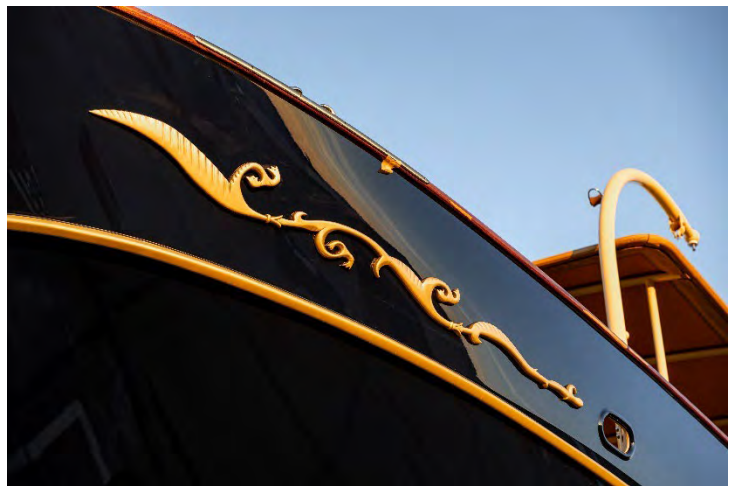


HUISFIT

BY ROYAL HUISMAN



ALTANTIDE FOLLOWING
HER REBUILD
BY HUISFIT



HUISFIT

BY ROYAL HUISMAN



In January 2021, this laurelled, historic Little Ship of Dunkirk arrived as deck cargo from the US and entered the shipyard for repairs and interior modifications.

In November 2023, she sailed away from Huisfit after a full rebuild with 40 per cent of her hull, deck and frames replaced, her interior fully reimagined and every onboard system except her original Gardner diesels fully overhauled or replaced.



HUISFIT

BY ROYAL HUISMAN

Her current owner, Jim Clark, has built three sailing yachts at Royal Huisman, the sloop Hyperion (1998), schooner Athena (2004) and the J Class Hanuman (2009). When Atlantide came on the market in 2020, he and wife, Kristy, felt that Atlantide would make a charming accompaniment to their J Class racing yacht.



“Hanuman was in the shipyard for some updates in October and Mr Clark asked if we could refit Atlantide the following year,” said a Royal Huisman spokesman. “The next thing we knew, he’d decided to ship Atlantide to the Netherlands immediately instead of waiting.”



UPON ARRIVAL IN THE NETHERLANDS

HUISFIT

BY ROYAL HUISMAN



Since the refit team hadn't seen the boat out of the water until it was hauled at the shipyard, the actual scope of the project still needed to be determined.



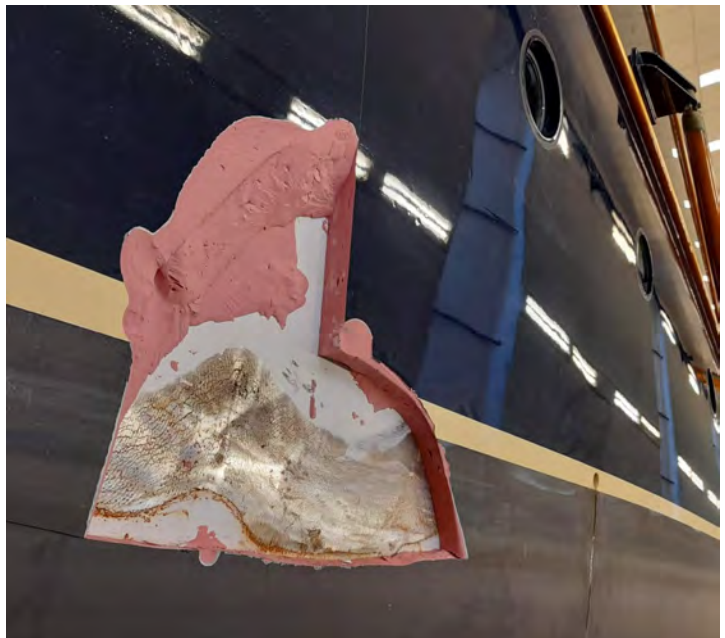
BEFORE HER REBUILD

HUISFIT

BY ROYAL HUISMAN



It wasn't long before the workmen discovered what appeared to be a crack in the hull. Fearing the worst, they began poking and picking at the gap. As pieces fell to the floor, they were relieved to see that it was filler material, not steel flaking away — but there was a surprising amount of it, about two inches thick in many places.



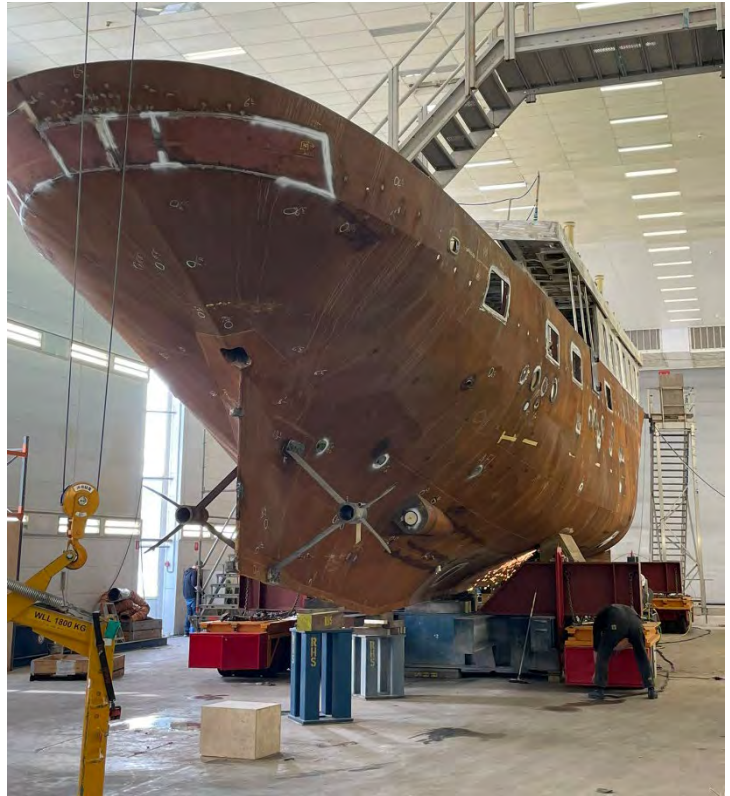
BEFORE HER REBUILD

HUISFIT

BY ROYAL HUISMAN

The full extent of the problem was revealed when the hull and deck were blasted to raw metal, exposing dented and deformed structure. An exterior refresh just became more complicated.

When workers began to remove the main deck windows in preparation for sanding the superstructure, they discovered that they were not actually mounted in frames but glued into openings packed and shaped with filler.



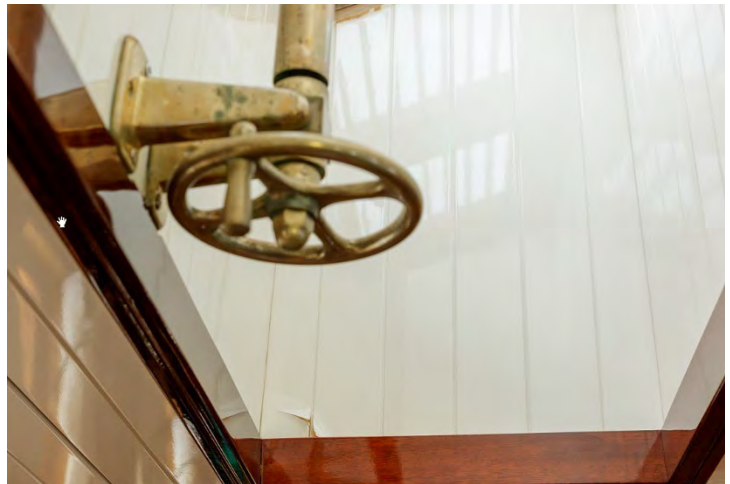
ATLANTIDE REBUILD IN PROGRESS

HUISFIT

BY ROYAL HUISMAN



Meanwhile, the team evaluating the interior discovered ongoing deck leaks had led to wet interior bulkheads, MDF substrates and built-ins. A straightforward interior refit quickly turned into an order to replace everything.

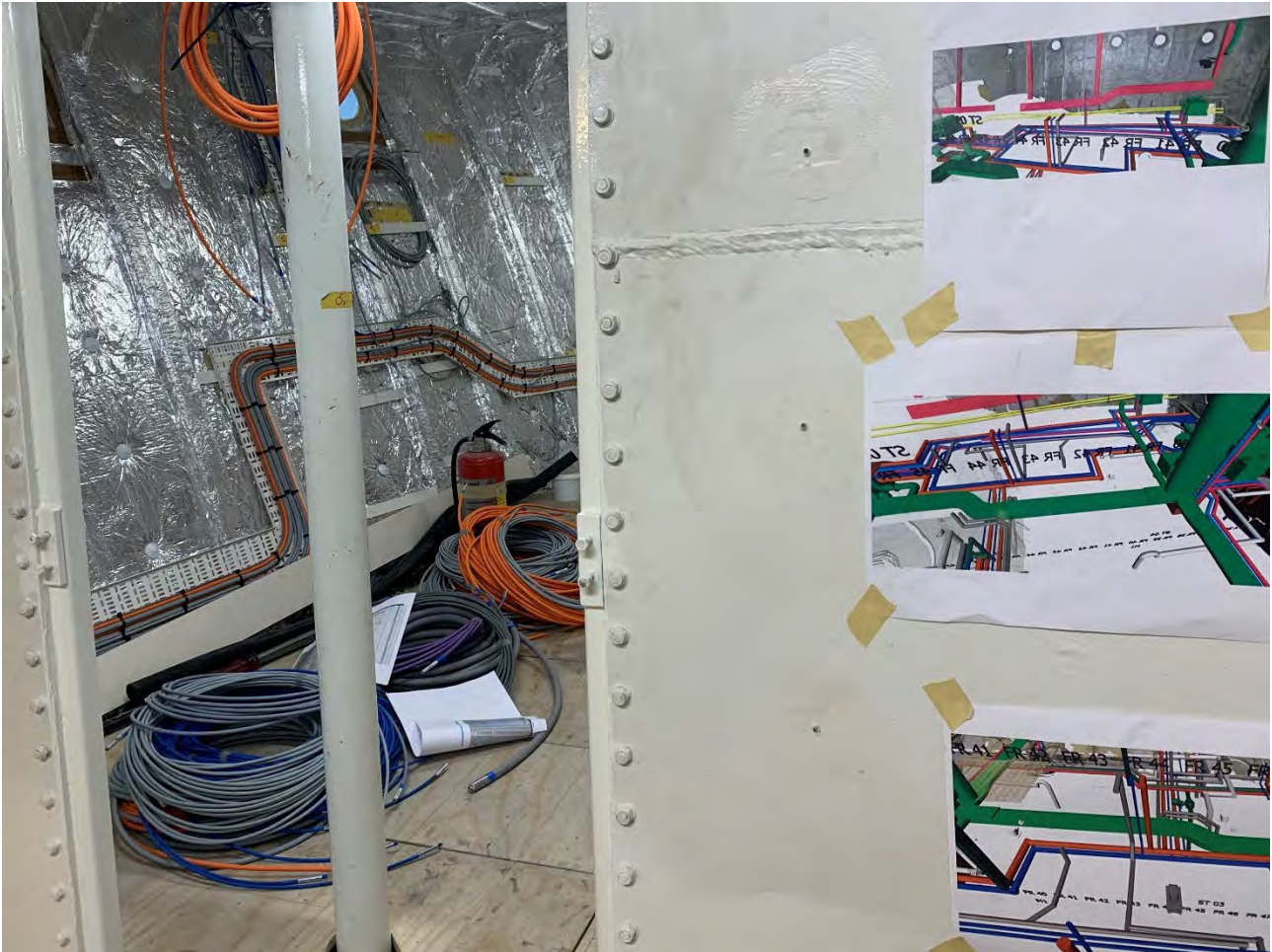


ATLANTIDE'S
INTERIOR BEFORE
AND DURING REBUILD



HUISFIT

BY ROYAL HUISMAN



WHEN A REFIT BECAME A REBUILD

For the next six months the Huisfit team studied, scanned and redesigned the boat in 3D. They noted that they had to use “sailboat thinking” to plan fitting new equipment, systems and lights as there was almost no space behind the walls or above the overheads.



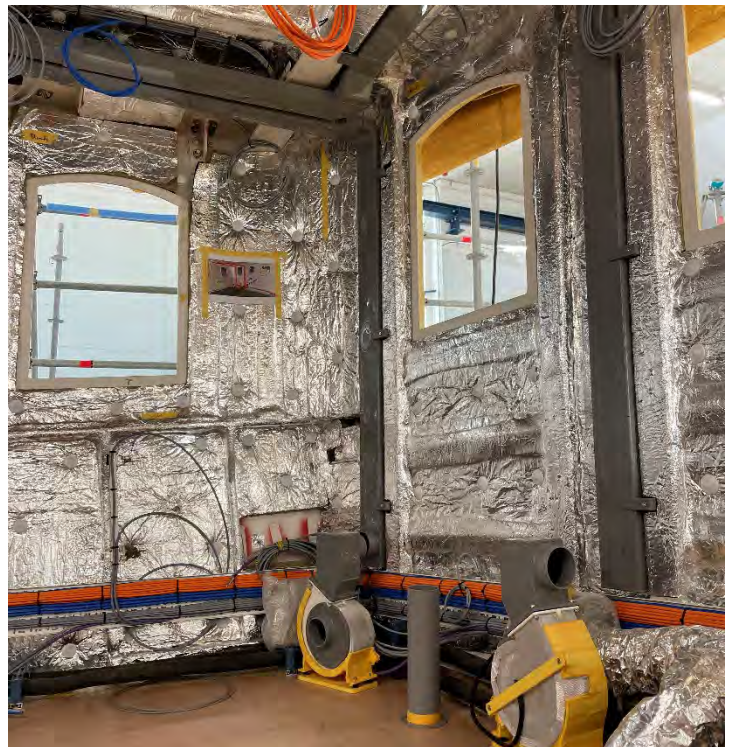
HUISFIT

BY ROYAL HUISMAN

There had been almost no insulation in the hull or superstructure and that needed to be remedied. In-house pipefitters began to customize pieces, even sourcing square PVC to optimize space by nestling pipes and conduit alongside frames.



SQUARE HVAC DUCTING
IN THE SALON
AND MEDIA LOUNGE



HUISFIT

BY ROYAL HUISMAN



The entire teak deckhouse was lifted off in one piece for restoration, preservation, strengthening, and refinishing in a dust-free environment.



HUISFIT

BY ROYAL HUISMAN



Decorative teak moldings were added to embellish its bright-finished exterior.



HUISFIT

BY ROYAL HUISMAN



Every piece of deck hardware, including port hole covers, was removed and catalogued for restoration. The work list grew.



HUISFIT

BY ROYAL HUISMAN



BEFORE
AND AFTER:

ATTENTION TO DETAIL
IN EVERY DETAIL



HUISFIT

BY ROYAL HUISMAN



DURING
AND AFTER
REBUILD



HUISFIT

BY ROYAL HUISMAN



ATTENTION TO DETAIL
IN EVERY DETAIL



HUISFIT

BY ROYAL HUISMAN



With the interior stripped to metal, new insulation, including anti-drumming panels, could cover every inch before framing the new interior began.

While the Clarks wished Atlantide's post-war profile to remain untouched, they wanted to simplify the style of the interior, replacing the elaborate Art Deco features installed by previous owner Tom Perkins.



ATLANTIDE'S ART DECO INTERIOR
BEFORE HER REBUILD AT HUISFIT

HUISFIT

BY ROYAL HUISMAN

Clark had formed a bond with the late designer Pieter Beeldsnijder over the course of three yachts and now he turned to the firm deVosdeVries design, whose principals had been part of Beeldsnijder's team, for the refit.

The Clarks briefed a less ornate 1930's style married with the look of Hanuman's classic interior that was created by Royal Huisman's artisans in French walnut.



ATLANTIDE'S NEW INTERIOR
AFTER HER REBUILD AT HUISFIT
BY ROYAL HUISMAN



HUISFIT

BY ROYAL HUISMAN



This is complemented by an artful antiqued finish created by an intensive 200-year-old process. To achieve this look, art and architectural renovation experts Acanthus International of Palm Beach, Florida, applied a 14-step finish of bleaching, coloring, French polishing, and distressing, all by hand.



HUISFIT

BY ROYAL HUISMAN



THE NEW MAIN DECKHOUSE
AND BRIDGE DECKHOUSE INTERIOR
UNDER CONSTRUCTION



HUISFIT

BY ROYAL HUISMAN



While the paneling and cabinetry could be built offsite, the flawless finish could only be accomplished once it was fitted aboard. The result not only rivals collector-quality period furniture, but is perfectly in keeping with the yacht's ethos.



ATLANTIDE'S NEW INTERIOR

HUISFIT

BY ROYAL HUISMAN

UPDATING THE GA

While the owner's stateroom and VIP aft keep to their previous footprint, the spaces are barely recognizable and recall quiet luxury.

BEFORE AND AFTER:
THE OWNER'S STATEROOM



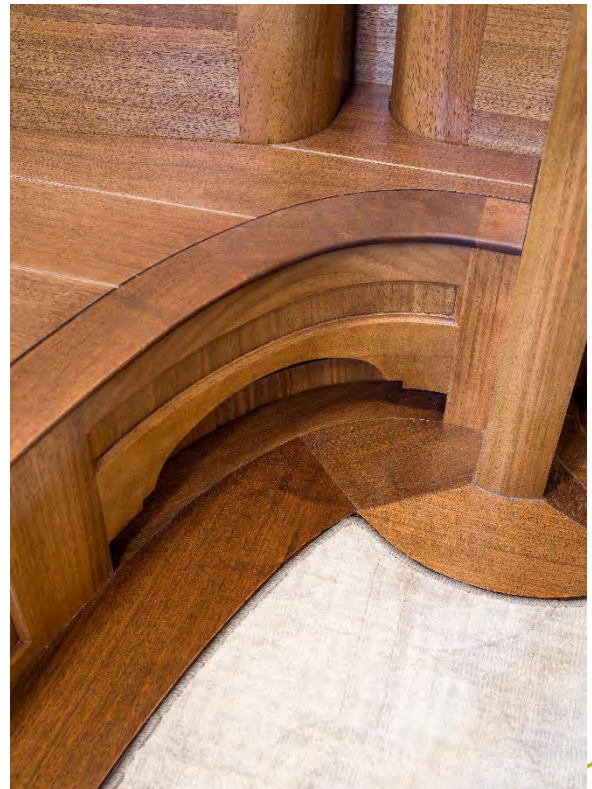
To squeeze every bit of space possible for the accommodations, the pipefitters and carpenters measured voids to the fraction of an inch. In fact, to create a bit more ceiling height for the owners, the propulsion shaft locks reside just ¼-inch below the owner's stateroom floor.

HUISFIT

BY ROYAL HUISMAN



The designers sought to minimize the impact of the hull curve in the owner's stateroom lowering the bed and rethinking storage.



HER NEW INTERIOR:
ATTENTION TO DETAIL
IN EVERY DETAIL

HUISFIT

BY ROYAL HUISMAN



BEFORE AND AFTER:
THE OWNER'S BATHROOM



HUISFIT

BY ROYAL HUISMAN



BEFORE AND AFTER:
THE VIP AFT



HUISFIT

BY ROYAL HUISMAN



Handsome detached night stands were added and port holes relocated. Here as in several other interior spaces, built-in bookcases were added. Just forward of the owner's suite is a beautiful stateroom for guests in identical style and finishes.



HUISFIT

BY ROYAL HUISMAN



Below forward is a refreshed flex cabin for either Atlantide's captain or extra guests.



HUISFIT

BY ROYAL HUISMAN



The galley also keeps its familiar footprint, but features modern white cabinets and professional surfaces surrounding new appliances.



HUISFIT

BY ROYAL HUISMAN



BEFORE AND DURING
REBUILD BY HUISFIT:
THREE STORY STAIRCASE

So, too, the entire three story main staircase has been reconfigured in a style in keeping with the 1930s. Gone are steps radiating from a polished stainless steel column and gleaming railings reflected in high-gloss bird's-eye-maple panels.



HUISFIT

BY ROYAL HUISMAN



Now, a more comfortable staircase with a genre-appropriate, raised-panel walnut staircase surround and a wood-clad center post is the center of circulation. The previous high-gloss teak and holly sole has been replaced with wide-planked natural finish walnut.

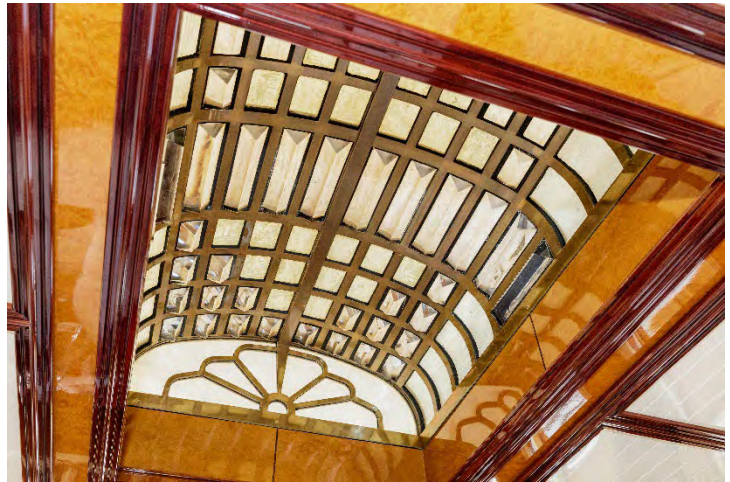


HUISFIT

BY ROYAL HUISMAN



MAIN SALOON
BEFORE
REBUILD



HUISFIT

BY ROYAL HUISMAN



MAIN SALOON AFTER REBUILD

The main saloon is now a more casual space focusing on plump French-blue sofas for après regatta relaxation. This is very much a boat for personal living rather than high-profile entertaining. A shallow coffered ceiling style is a softer look than the lacquered tongue-and-groove panels from the Perkin's high-profile refit during the late nineties. Now, French-polish straight grain walnut joinery paired with walnut burl panel insets and hand-painted overheads look perfectly at home.

HUISFIT

BY ROYAL HUISMAN



ABOVE AND RIGHT:
FORWARD SUPERSTRUCTURE
BEFORE AND DURING REBUILD



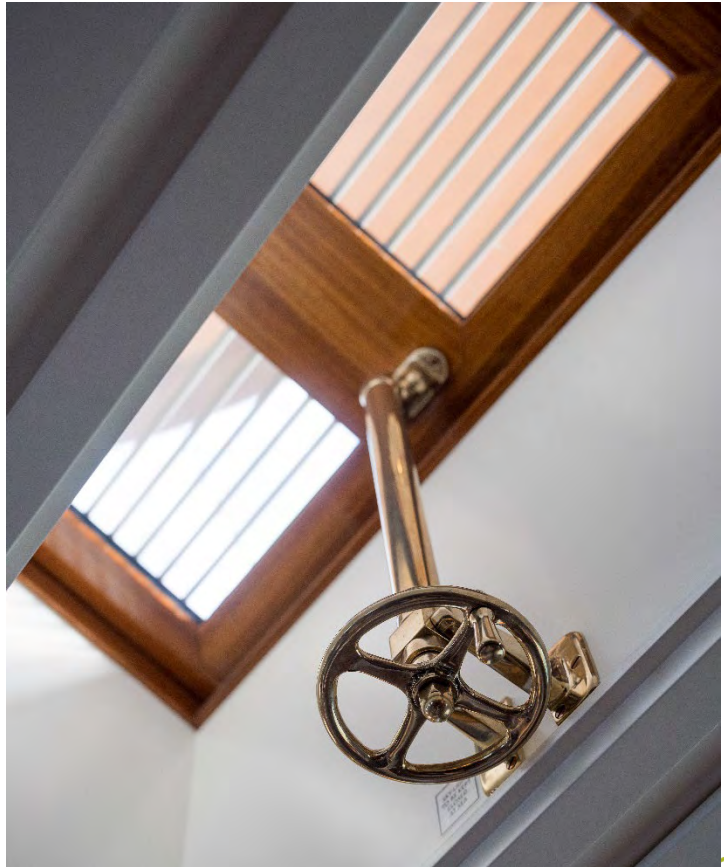
One of the biggest changes is that the former indoor dining saloon overlooking the foredeck is now a comfortable media room with a welcoming overstuffed sofa and chairs upholstered in a linen-textured off-white shade.

HUISFIT

BY ROYAL HUISMAN



AFTER REBUILD BY HUISFIT:
THE NEW FORWARD MEDIA LOUNGE



HUISFIT

BY ROYAL HUISMAN



Dining has moved to the aft deck under a fixed bimini awning with removable weather curtains. An enormous custom table on centreline showcases the joiner's skill with a diamond design and glass-like surface finish. Comfortable, padded captain's chairs are easy to position at will or store on passages.



HUISFIT

BY ROYAL HUISMAN



A small, matching teak cabinet nestled between the curved steps to the upper deck and the door to the saloon facilitates meal service. The fantail is filled with large cushions and pillows for lounging.



HUISFIT

BY ROYAL HUISMAN



The wheelhouse is the only area of the yacht with a teak interior matching the varnished teak brightwork outside. It's a nice homage to tradition. Ninety-five percent of the exterior bronze fittings are original and beautifully restored.

With every original overhead removed, redoing the lighting plan was an easy decision and deVosdeVries design brought in the same type of ambient lighting the owners enjoy on Hanuman.



HUISFIT

BY ROYAL HUISMAN



ATLANTIDE'S NEW WHEELHOUSE





UNDOING WELL-INTENTIONED MODIFICATIONS

Caleta, as she was called at launch in 1930, was originally painted white with a varnished teak superstructure and a black smokestack. When she was taken by the British Navy for use in WWII, her yachty features disappeared. High maintenance items such as teak bright work were given a dull coat of brown paint, thought to protect the wood until such time as it would be returned to yacht service.

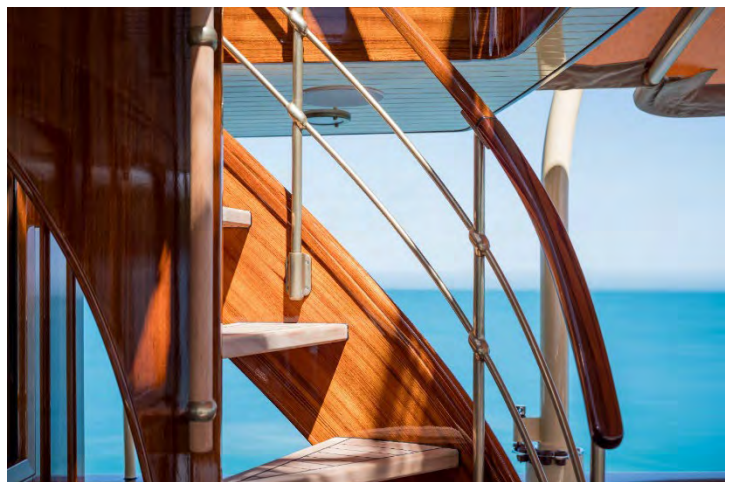
The tiny teak pilot house may have received some plating as the ship was lightly armed for fight. Along the way, her subsequent yacht restorations first expanded the main deckhouse and then rebuilt it in aluminum, topping it with a teak bridge deckhouse. But aluminum and steel don't play well together and even though some effort had been made to isolate the two materials, when the yacht was dismantled for this project, galvanic corrosion was evident and much more than the joint needed replacement.

HUISFIT

BY ROYAL HUISMAN



Along with new deck and superstructure plating, Huisfit also re-engineered the skylights. “There is only one way to do things for an experienced returning owner like Jim Clark,” said says Huisfit’s spokesman. “When we would discover problems, we know what he expects”.



HUISFIT

BY ROYAL HUISMAN



Hanuman's captain, Josh Luckhurst, served as project manager and supplied on-the-spot decisions. "The previous owners did not keep a full-time crew on the boat as they tended to use it only in summer and it suffered a bit for that," Clark said. "And it appears that some early work may have been more about cosmetics or meeting a deadline than longevity of the vessel. Everything that Royal Huisman replaced was done with the highest quality."



HUISFIT

BY ROYAL HUISMAN



The ship appears to have always been a bit asymmetrical – a previous captain noted that it didn't sail quite straight– however, 93 years and war action had taken their toll. In some places, the steel hull plates sagged against the frames. Rather than replace misshapen steel plate that was otherwise sound, shipwrights carefully heated and stretched the metal, helping it flatten as it cooled, so that less filler would be needed for a smooth finish. Of course, the fancy trail boards no longer fit so they scanned the originals as well as the hull and milled glamorous new, gold-looking 3D elements. The largest challenge, one of the foremen said, was taking things apart and redesigning at the same time. "That's what took time," he said. "We rarely get involved in designing because it is usually already designed before a yacht comes in for a refit."

To help with maneuvering, Huisfit's engineers proposed a modification to the original rudder. They increased its size by about 20 per cent and extended it to fill a small gap below the keel area to help the vessel track better. Equally important, it reduced turbulence. Additionally, the stabilizers were upgraded with new fins presenting 18 per cent larger surface area and Naiad AtRest controllers featuring faster response, especially at slow or no speed. Captain Luckhurst noted that on the passage from Palm Beach to the Caribbean in February 2024, Atlantide was "incredibly stable".

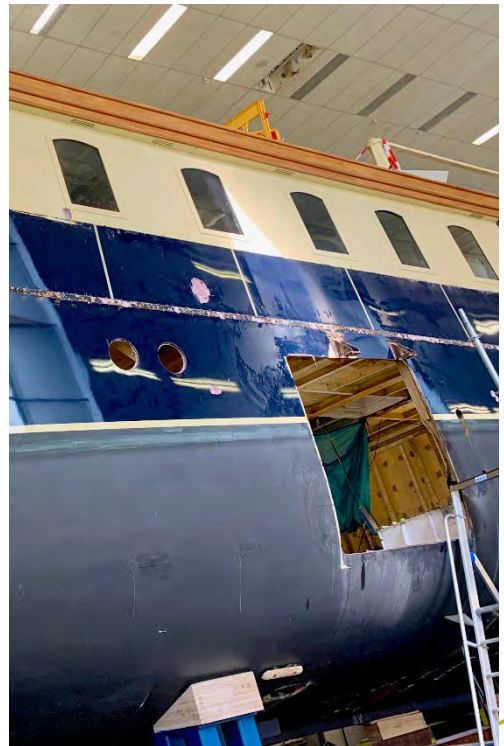
HUISFIT

BY ROYAL HUISMAN



ATLANTIDE'S HEART REMAINS IN PERFECT ORDER

Crating up a pair of 3635kg / 8014lbs engines is no easy task, especially as soft patch openings were never envisioned for Atlantide's decks. To minimize damage, a single 2.5m / 8ft opening was cut in the portside hull and a temporary boom crane welded to the engine room overheads allowed the 8-cylinder, 255hp Gardner engines to be slid out of the hull and shipped home for a thorough reconditioning.



HUISFIT

BY ROYAL HUISMAN



“They are very straightforward machines that work well. We just added some sensors and alarms,” said a Huisfit spokesman. The Gardner twins left their home in Canterbury, UK, in February 2022 complete with new Twin Disc reversing gearboxes ready, the company asserts, for another 50 years of service.

Huisfit matched them up with a new split exhaust system, that discharges either through the yacht's funnel or at waterline. A beautiful new genset installation and electrical switchboard was custom made to fit Atlantide's compact engine room. In fact everything from watermakers to stabilizer fins was uniquely tailored to fit the project, the latter designed to fit the hull shape via 3D modeling. One of the managers called it “an interesting puzzle”, although one suspects that is an understatement.



HUISFIT

BY ROYAL HUISMAN



As much of the original exterior teak as possible, including massive cap rails, was saved, restored, and pieced back in with new wood. So, too, were the winches, which are thought to be 60- to 70- years old. All salvageable hardware was overhauled and polished, and both old and new pieces were given an aluminum-bronze chemical treatment for a smooth, satin, slightly patinaed, finish.



HUISFIT

BY ROYAL HUISMAN



ABOVE AND RIGHT:
ATLANTIDE'S BRIDGE
BEFORE REBUILD



HUISFIT

BY ROYAL HUISMAN



Although the bridge looks classic and keeps to its original footprint, the yacht has been treated to brand new systems monitoring, navigation and communications gear and exterior LED lighting.



HUISFIT

BY ROYAL HUISMAN



HUISFIT

BY ROYAL HUISMAN



When originally launched nearly one century ago, folks were still a bit skeptical of relying solely on diesel engines. Just as with every yacht her age, Caleta was rigged to sail if necessary to extend range or get home.

It's probably not surprising that the Clark's work list included a brand new rig and sails, all built to the original plan that pushed her along at up to seven knots. The Clarks will primarily use Atlantide as a day boat during the summer where she will be moored at Martha's Vineyard and as a tender to Hanuman at bucket races.



HUISFIT

BY ROYAL HUISMAN



READY FOR HER NEXT CENTURY

Ninety-three years on and this little gentleman's yacht tender is ready to return to her original duty as Lady in Waiting to a magnificent racing yacht, kicking up her heels at all the great regatta venues. Who would have thought she would still be in style? It's interesting, but perhaps not surprising, how the rebirth of the J Class itself has given rise for a reverence to these classic "tenders". There is a sense of romance — perhaps even a longing for — the golden age of yachting, or at least how we imagine it to be.

"It's a work of art," states Clark. "There were parts of the yacht, [both the interior and the mechanical spaces] that were not well thought out before. Now it is."



HUISFIT

BY ROYAL HUISMAN



Of course it's technology, from air conditioning and insulation to stabilizers, and powered winches to fiber optic cables that make the dream work for today's discerning owners. No doubt Celata's owner would recognize his proud little ship and be thoroughly amazed.

"What I like is the historic quality of this boat; nothing is plastic," says Clark. Thinking of the J and back to Athena, perhaps it is no surprise when he adds, "I'm a classic boat snob. I like the old wood look; big modern boats do nothing for me."



HUISFIT

BY ROYAL HUISMAN



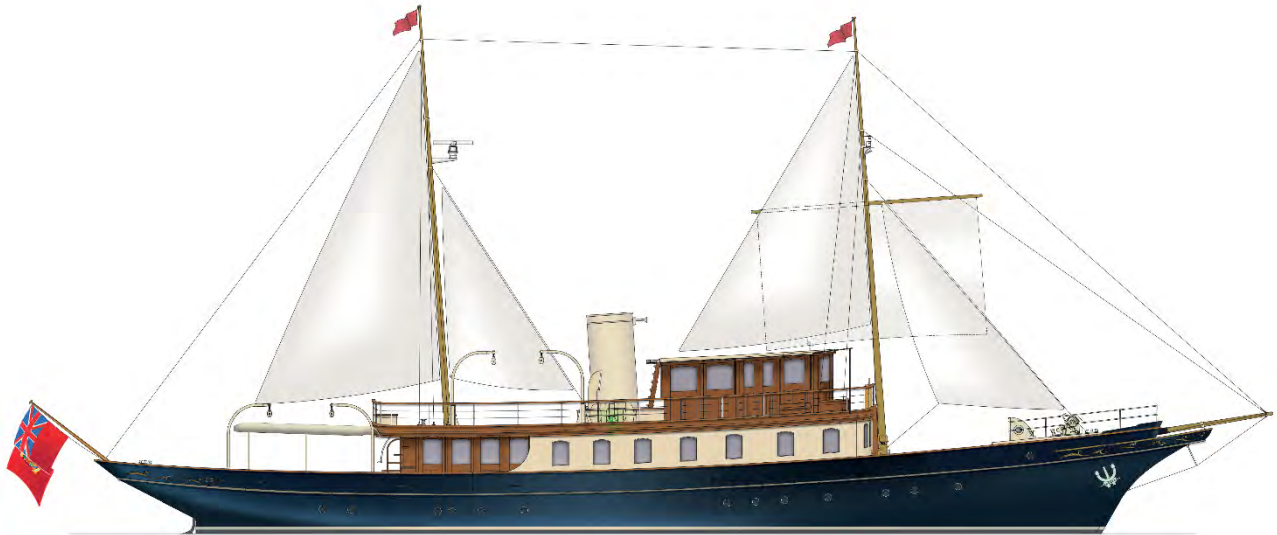
**“What I like is the historic quality
of this boat; nothing is plastic.
I’m a classic boat snob.
I like the old wood look;
big modern boats do nothing for me”**

Jim Clark

END OF PRESS RELEASE

EDITOR'S NOTES

MAIN SPECIFICATIONS



ATLANTIDE

Type:	Motorsailer
Original builder:	Philip & Sons U.K.
Exterior design:	Alfred Mylne
Year of launch:	1930
Length overall:	37m / 122ft
Length hull:	35m / 116ft
Beam:	5.8m / 19 ft
Draft:	2.3m / 7.5 ft
Refit shipyard:	Huisfit by Royal Huisman
Refit interior:	deVosdeVries design
Refit year:	2021 - 2023
Construction:	Steel hull; aluminum superstructure, teak bridge deckhouse

HYPERION

royalhuisman.com/hyperion [\[link\]](#)

ATHENA

royalhuisman.com/athena [\[link\]](#)

HANUMAN

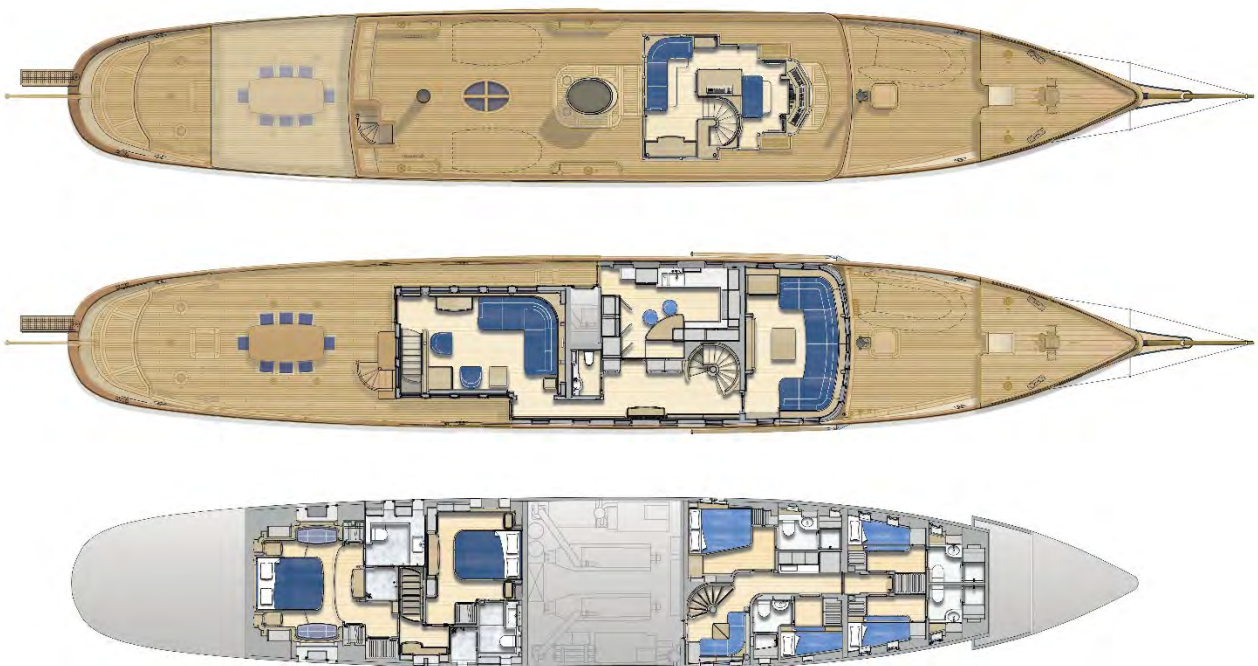
royalhuisman.com/hanuman [\[link\]](#)

HUISFIT

BY ROYAL HUISMAN



GENERAL ARRANGEMENT





ORIGIN OF ATLANTIDE

Atlantide was designed by Alfred Mylne who was also the naval architect of the British Royal Yacht Britannia. Sir William Burton, who was Thomas Lipton's helmsman for his America's Cup challenger Shamrock IV, had the yacht built at Phillip and Sons in Dartmouth, UK, to serve as a tender to his 12 metre and named her Caleta. She herself carried a full sail plan and was said to reach seven knots under sail. Like so many private yachts, she was pressed into service by the Navy for the war effort in 1939.

After the Royal Navy released Caleta, she was purchased by a Greek yachtsman in 1946 who had her refitted at Vosper Thorneycroft in a two-year project. She then sailed under the name Ariane to the Med where she was well known in all the best ports for nearly 50 years. In 1960 she was renamed Corisande and based in Antibes where she appeared in the 1962 film 'Tender is the Night' starring Jennifer Jones and Jason Robards. During the late 1980s, she was purchased by Count Nicolo delle Rose who gave her the name Atlantide, the Italian name for Atlantis, and returned her to white livery. She passed through several hands and was being used as a dive boat in Malta, when she was next offered for sale.

HUISFIT

BY ROYAL HUISMAN



Her next owner was the American investor and yachtsman Tom Perkins who rebuilt and modernised the little yacht at Camper & Nicholsons in 1999, replating about 90 per cent of her hull and removing a poorly styled deck house. Designer Ken Freivokh oversaw the creation of new superstructure and a gleaming and elaborate Art Deco interior of quilted maple, ebony, paduka with overlays of abalone and mother-of-pearl.



In keeping with his vision for a gentleman's yacht, she was given two staterooms for the owner's party and three crew cabins. Lalique fittings twinkled everywhere. Her launch party and christening was a celebrity Who's Who. When she wasn't serving as a tender to his classic schooner Mariette, Perkins regularly sent the little yacht transatlantic and she also cruised the fjords of Norway and as far west as the coast of British Columbia. She was sold in 2012 to new owners who cruised her around New England. Subsequent small refits occurred in 2013 and 2015.

WHAT WERE THE LITTLE SHIPS OF DUNKIRK?

On May 14, 1940, the BBC broadcast an announcement from the British Admiralty: All owners of self-propelled pleasure craft between 30 feet and 100 feet in length not already requisitioned were to send the vessels' details to the Admiralty within 14 days. The war was going badly for the Allies and thousands of soldiers were being pushed toward the coast of France, cutoff from a means to escape advancing German troops. The only way out would be by sea but the British navy lacked enough shallow water vessels to collect the retreating soldiers. But England has always been a seafaring nation so it called on its citizens to offer up their own boats to save lives. Along the coast of France, Belgium and The Netherlands, those citizens were doing the same.



In all, a collection of approximately 850 private boats and 20 warships participated in Operation Dynamo, not all were documented or known. The term Little Ship applies to all craft answering the call that were originally privately owned and includes pleasure boats as well as commercial vessels such as barges and fishing boats. For 9 days from the 26th of May to the 4th of June they raced back and forth snatching soldiers, landing craft and whatever equipment they could from the clutches of the advancing enemy under relentless shelling. More than 200 ships were lost at Dunkirk evacuating troops from the beaches and harbor.

Caleta was an active participant, setting out for Dunkirk on May 31st in the company with the yachts Glala and Amulree. She operated under intense enemy fire and dive bomber attacks over seven days, during which time she assisted various vessels and embarked 35 troops from a disabled landing craft that she then took in tow. The tow parted twice, but still she was able to get it back to English soil.



For this valent service, she is entitled to fly the distinguished St. George's Cross.



AT THE HEART OF IT ALL: 1930 GARDNER DIESELS

Gardner machinery has been a staple of British industry since 1868 when Lawrence Gardner opened his first shop in Liverpool. Beginning with just a boiler and a lathe, he made replacement parts for all kinds of broken equipment but then, this man with no education but much determination began building his own inventions such as a coffee roaster and a steam-powered hammer. He died young, leaving the business to his widow, who recruited their six sons to continue the business. His namesake, Lawrence, modernized the company and expanded product offerings.

In 1891, the Illustrated Magazine of Practice and Theory carried an article about an engine that used hot air to drive pistons, turning a shaft to power machinery. The Gardners quickly arranged to manufacture it. Their piston engine generated 5/8 hp at 170 rpm powered simply by hot air. When the internal combustion engine debuted, they were among the first to adopt it. Gardner, now located in Canterbury, UK, duplicates all the parts for every engine it's ever made and keeps more than 100,000 parts in stock. Currently, Gardner still builds new engines. Its marine engine overhaul service has captured the loyalty and affection of classic yacht owners world-wide.

HUISFIT

BY ROYAL HUISMAN

HUISFIT BY ROYAL HUISMAN

Revive your dream - Royal Huisman is principally known as a builder of fine custom yachts, but the same standards of expertise and craftsmanship are equally accessible for superyacht refits. Every yacht requires a refit and refurbishment from time to time. Even Royal Huisman yachts eventually feel the strain of the extensive global passage-making so thoroughly enjoyed by their owners. Huisfit, Royal Huisman's dedicated division for refit, rebuild and renewal, has enjoyed growing success since extending its reach to the wider superyacht fleet. Huisfit offers everything from classification-driven refit and maintenance work to the re-arrangement and refurbishment of superyacht interiors.

In recent years Huisfit has proven to be a specialist for various yacht conversions, rebuilds and green solutions. The Huisfit team recognizes that every refit comes with a unique set of requirements, relevant infrastructure, access to specialist trade skills and equipment, and suitable slots to respect the yacht's schedule: expertise à la carte. All projects are able to benefit from the comprehensive and highly regarded in-house design engineering capability of Royal Huisman and sister company Rondal.

Many Huisfit commissions are undertaken for repeat clients and returning yachts initiated by word-of-mouth recommendations, always based on the team's understanding that today's client is tomorrow's ambassador.



HUISFIT

BY ROYAL HUISMAN

HUISFIT REBUILD SOLUTIONS

Restoration of classics and rebuilds of historical yachts - Huisfit has an established track record of success with such projects. Structural work, repairs and conservation of the yacht's full scope: hull conservation, sail handling, exterior, interior and board systems. Although rebuild projects by Huisfit are never a "typical refit", the scope of such projects is widely regarded as a newbuild, both by those involved at the shipyard and by outside observers.



Thanks to the owners of historical rebuild projects, these yachts will not become forgotten history: each one will remain a living sailing legend.

Could HUISFIT be the smart choice for your project too?

huisfit.com > skills > rebuild solutions [\[link\]](#) or meet the team at METSTRade 2024 in Amsterdam, 19 - 21 November, stand 09.105

HUISFIT

BY ROYAL HUISMAN



VIDEO READY FOR EMBEDDING

By Acquafilms

youtube.com/@Huisfit [\[link\]](#)



Alternatively on Vimeo:

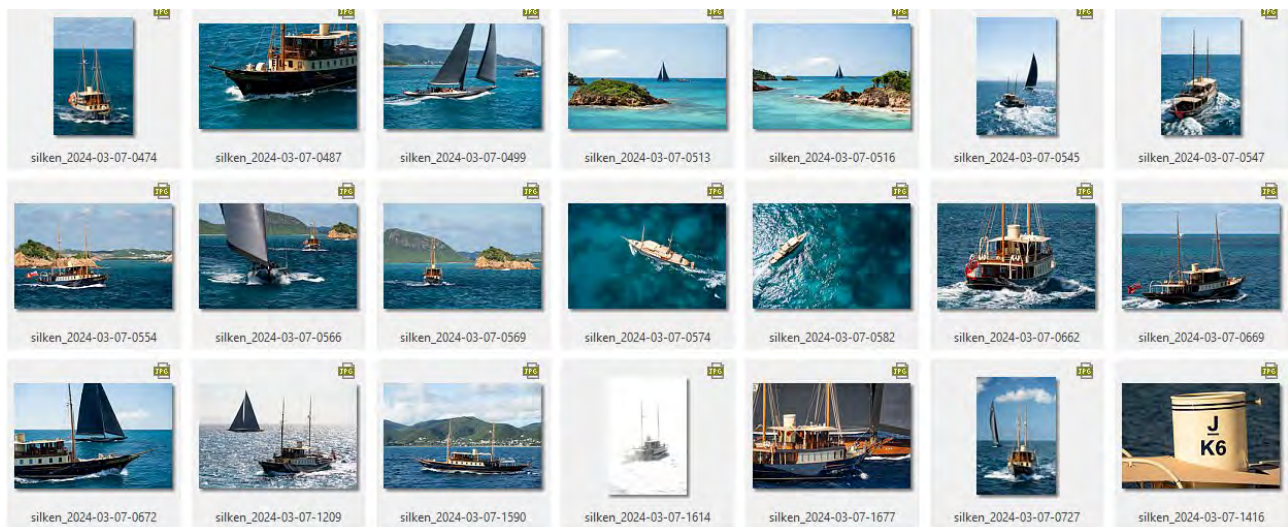
vimeo.com/1029196578/6e8763ffee

HUISFIT

BY ROYAL HUISMAN

LAST, BUT NOT LEAST

As you might know Huisfit by Royal Huisman works closely with our clients and members of the yachting press. We do this in order to give all our media friends equal support and opportunity. Please introduce us to new press colleagues: we will be pleased to assist them and add their contact details to future press releases.



PREVIEWS OF STUNNING
PHOTOSHOOT BY
CORY SILKEN

The images from this press release can be available on request. Please respect the following:

- **“Let the yacht be the hero”**: in general, the owners of the Huisfit by Royal Huisman yachts respectfully ask that their names, nationality, occupation and all additional references to their personal lives should be excluded from all articles printed, online or otherwise. The owners of Atlantide, Jim and Kristy Clark, are an exception to this general request.
- The information and illustrations are for media or press publications only.
- Huisfit requests that the use of images should also acknowledge the creator where applicable. The file name contains the photographer’s name.

For any questions, please contact Jurjen van 't Verlaat (jurjen@huisfit.com or +31 527 243131).
Feel free to also send your draft text for review or fact checking before publication.